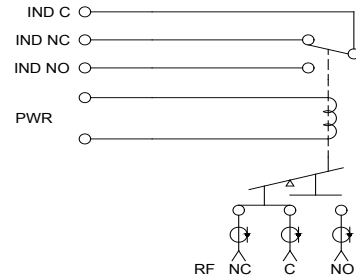
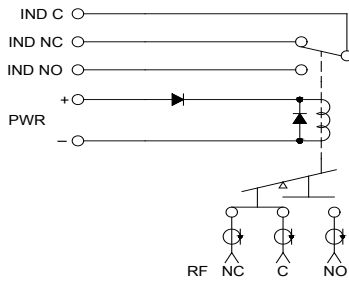


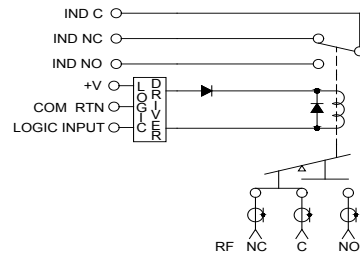
Schematic S1



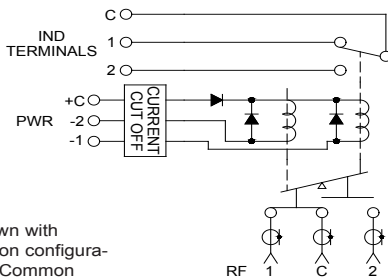
Schematic S2



Schematic S3

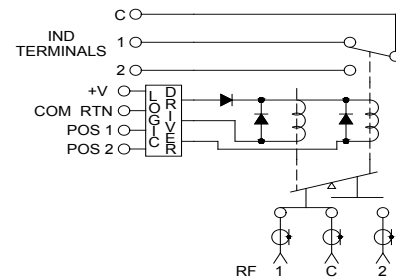


Schematic S4

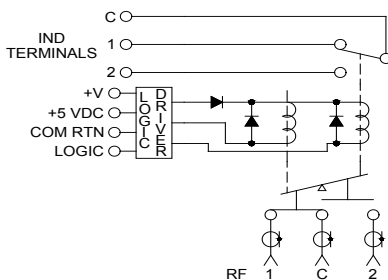


Schematic shown with Positive Common configuration. Negative Common configuration has all Diode orientations reversed.

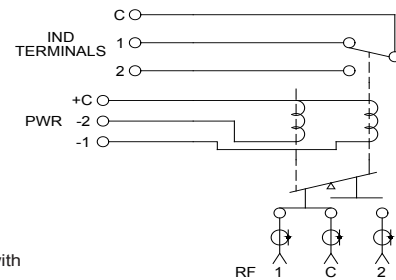
Schematic S5



Schematic S6

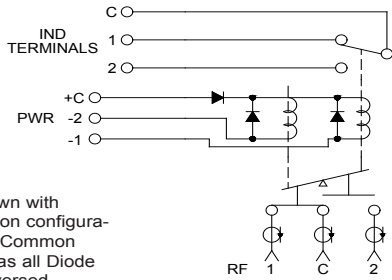


Schematic S7



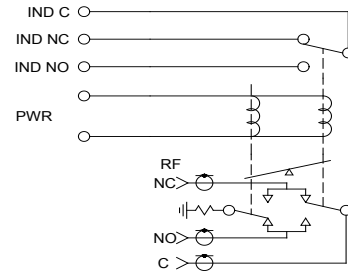
Schematic shown with Positive Common configuration.

Schematic S8

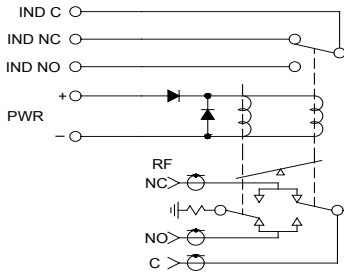


Schematic shown with Positive Common configuration. Negative Common configuration has all Diode orientations reversed.

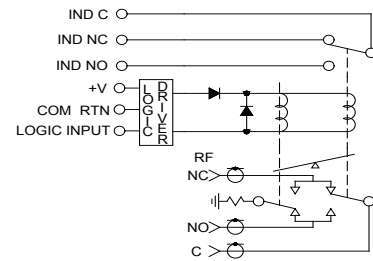
Schematic S9



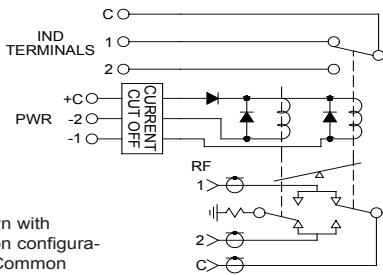
Schematic S10



Schematic S11

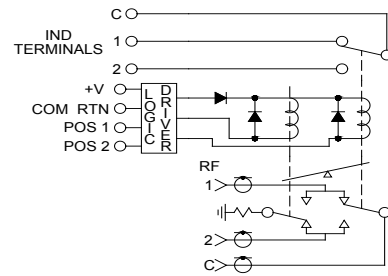


Schematic S12

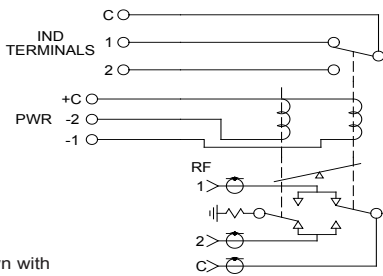


Schematic shown with Positive Common configuration. Negative Common configuration has all Diode orientations reversed.

Schematic S13

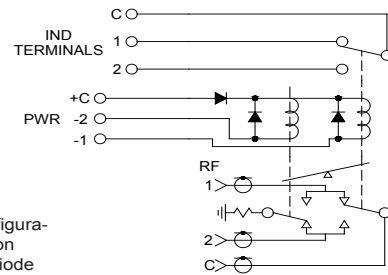


Schematic S14



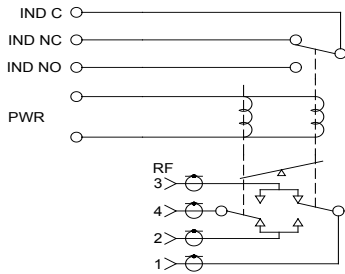
Schematic shown with Positive Common configuration.

Schematic S15

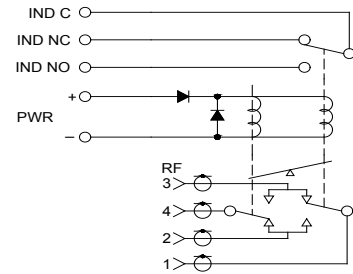


Schematic shown with Positive Common configuration. Negative Common configuration has all Diode orientations reversed.

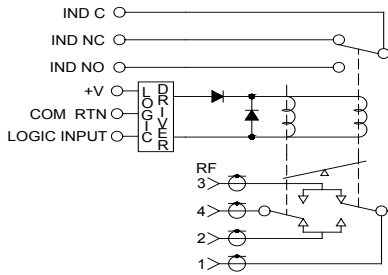
Schematic S16



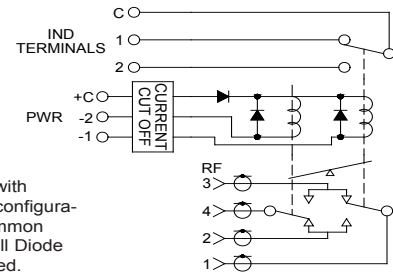
Schematic S17



Schematic S18

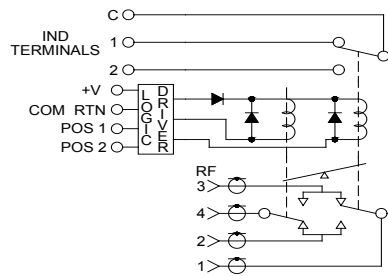


Schematic S19

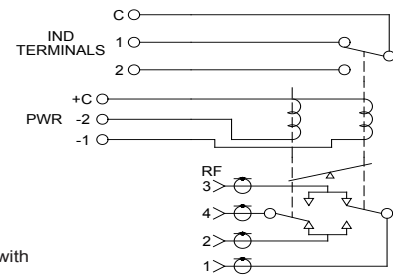


Schematic S20

Schematic shown with Positive Common configuration. Negative Common configuration has all Diode orientations reversed.

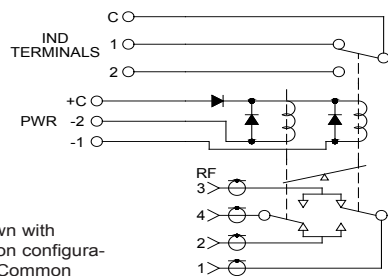


Schematic S21



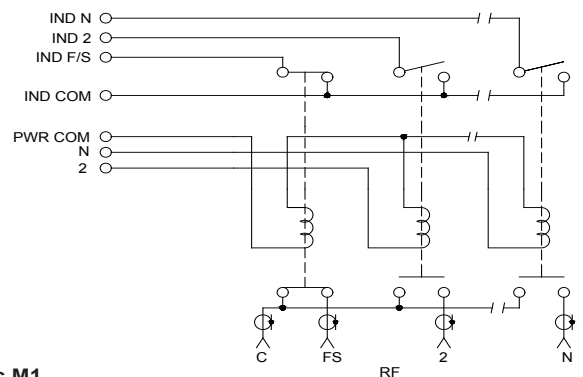
Schematic S22

Schematic shown with Positive Common configuration.

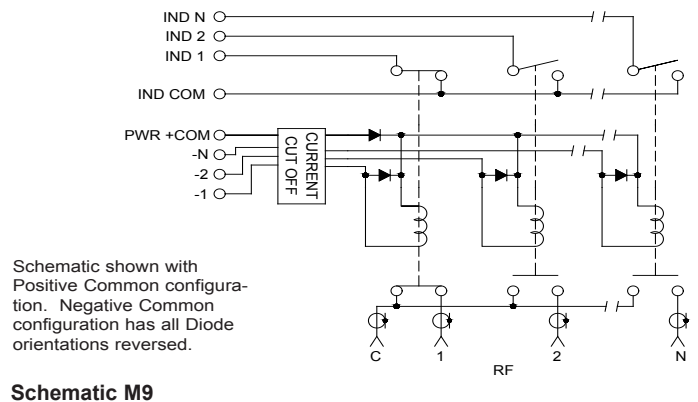
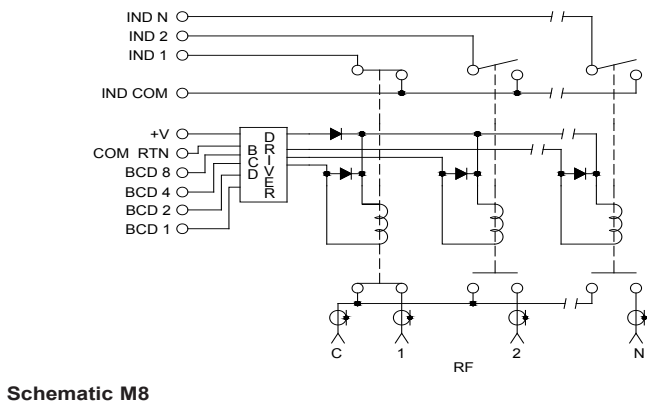
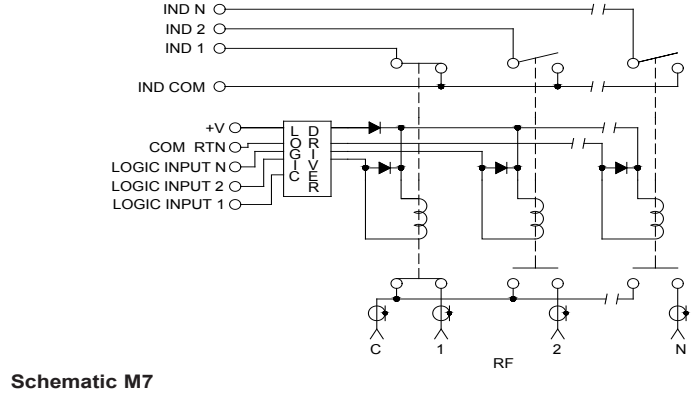
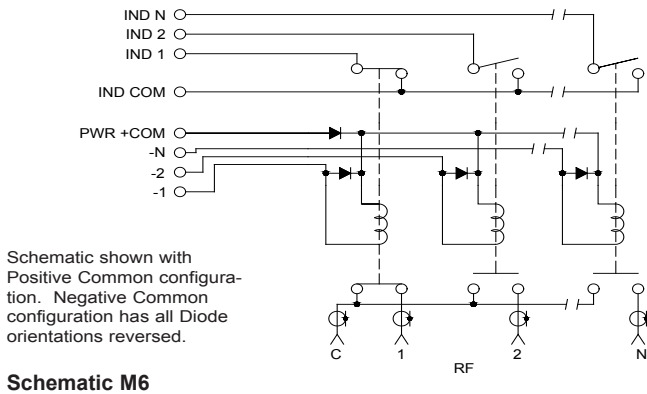
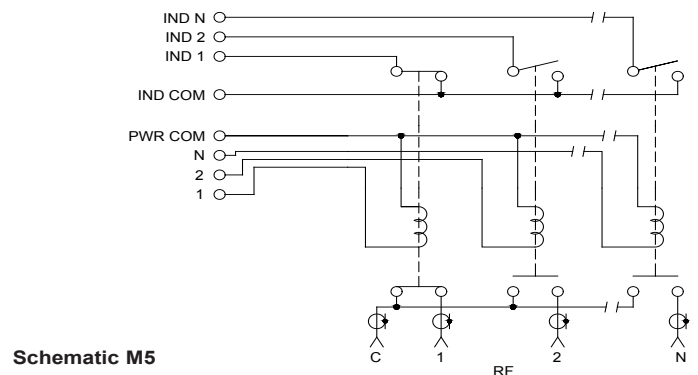
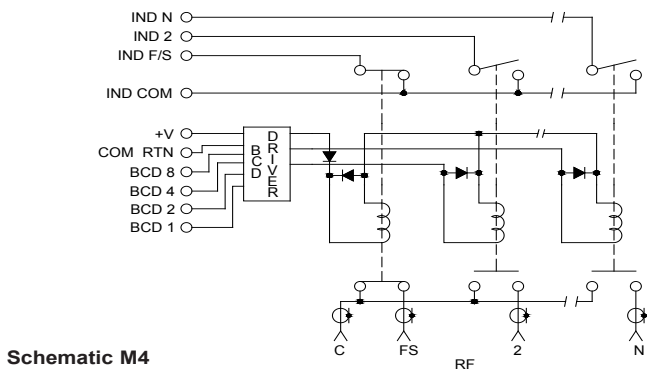
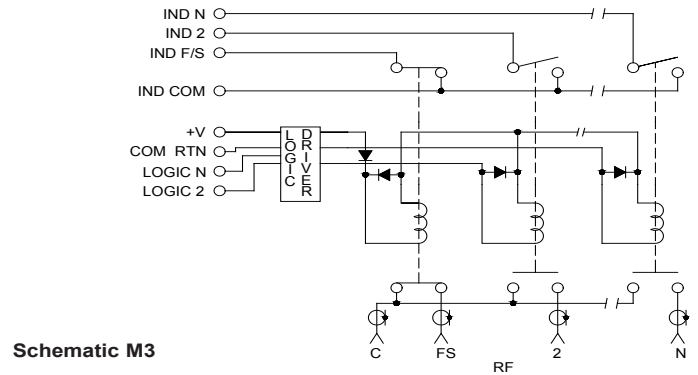
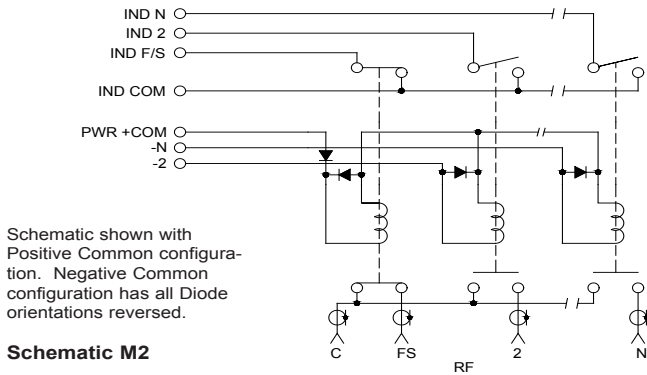


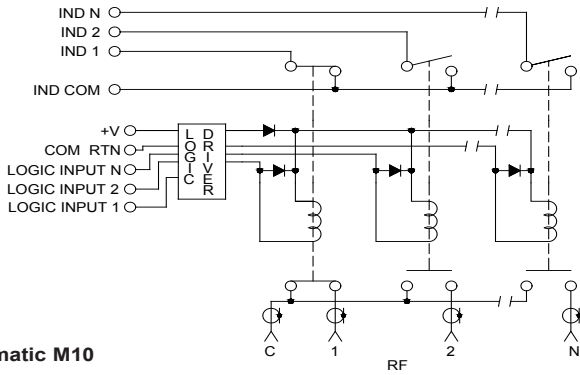
Schematic S23

Schematic shown with Positive Common configuration. Negative Common configuration has all Diode orientations reversed.

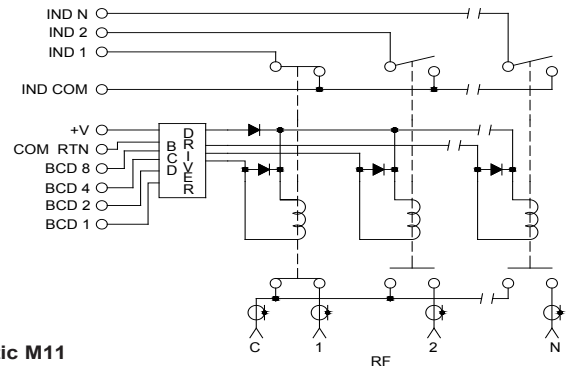


Schematic M1

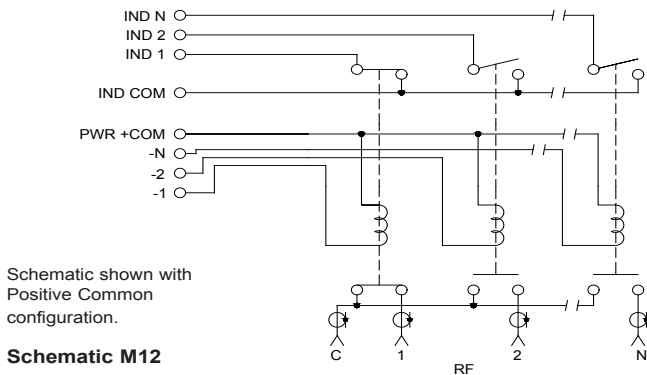




Schematic M10

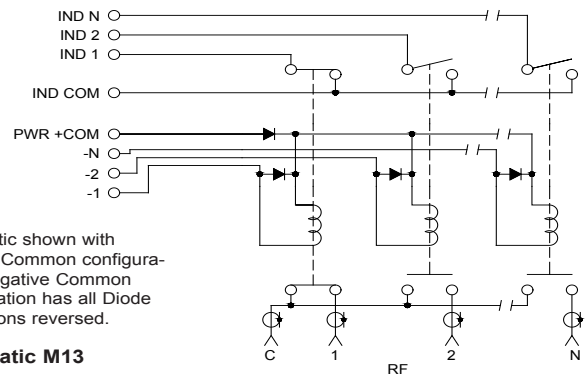


Schematic M11



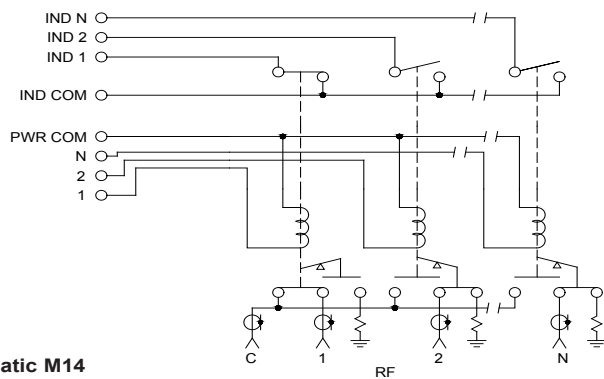
Schematic shown with Positive Common configuration.

Schematic M12

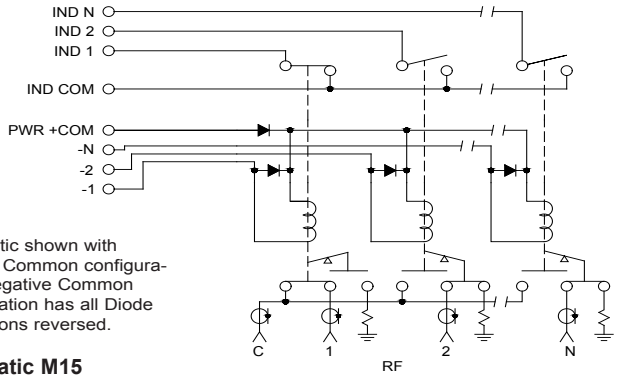


Schematic shown with Positive Common configuration. Negative Common configuration has all Diode orientations reversed.

Schematic M13

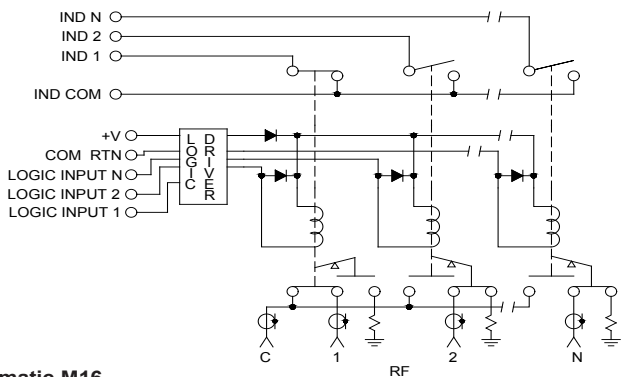


Schematic M14

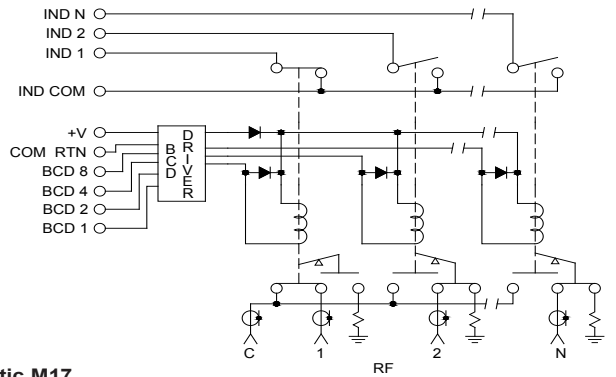


Schematic shown with Positive Common configuration. Negative Common configuration has all Diode orientations reversed.

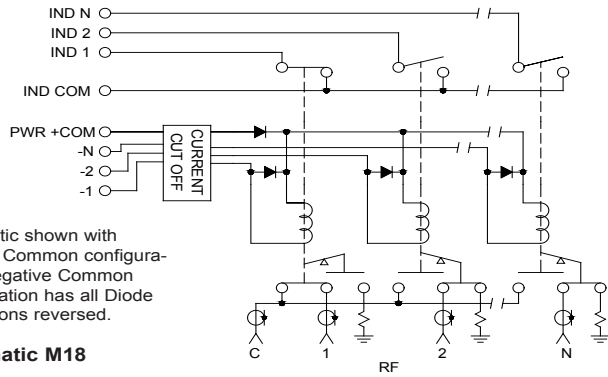
Schematic M15



Schematic M16

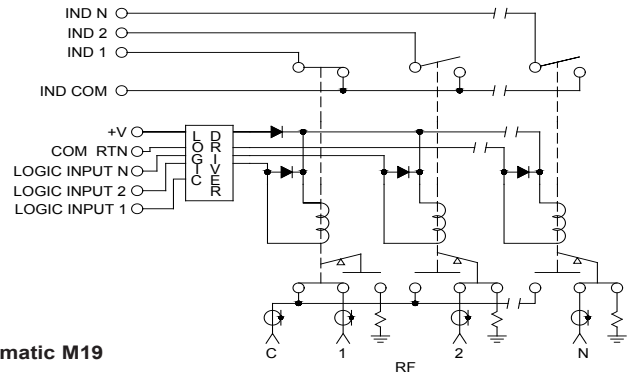


Schematic M17

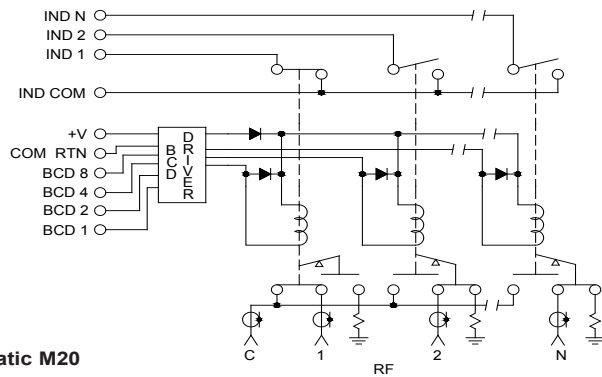


Schematic shown with Positive Common configuration. Negative Common configuration has all Diode orientations reversed.

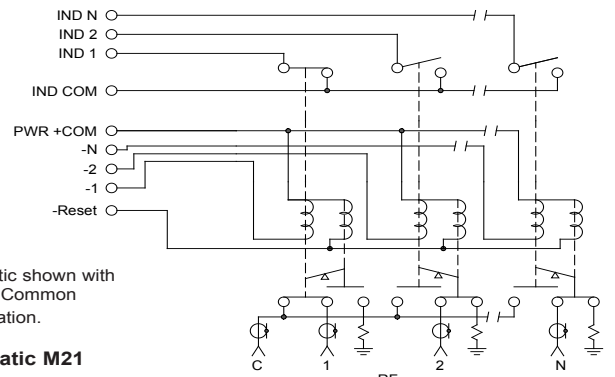
Schematic M18



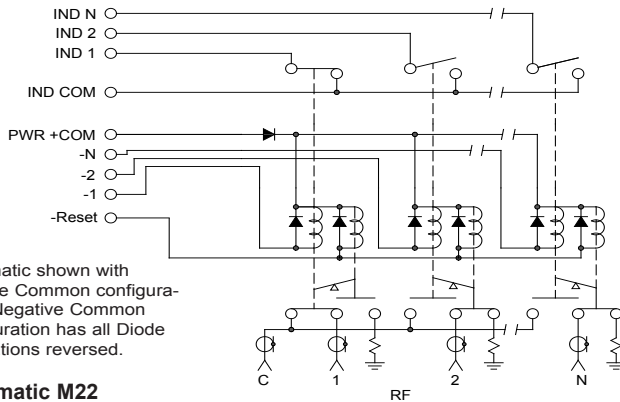
Schematic M19



Schematic M20



Schematic M21



Schematic M22

Single Line Logic Driver Truth Table for 1P2T & Transfer Latching Switches	
Logic	Position Activated
0	2
1	1

NOTE: All BCD inputs shown in the Pin-Out Tables must be controlled. Devices will not function if any BCD inputs are floating.

Low Logic BCD Truth Table for 1P3T to 1P10T Switches					High Logic BCD Truth Table for 1P3T to 1P10T Switches				
BCD 8	BCD 4	BCD 2	BCD 1	Position Activated	BCD 8	BCD 4	BCD 2	BCD 1	Position Activated
1	1	1	1	1	0	0	0	0	1
1	1	1	0	2	0	0	0	1	2
1	1	0	1	3	0	0	1	0	3
1	1	0	0	4	0	0	1	1	4
1	0	1	1	5	0	1	0	0	5
1	0	1	0	6	0	1	0	1	6
1	0	0	1	7	0	1	1	0	7
1	0	0	0	8	0	1	1	1	8
0	1	1	1	9	1	0	0	0	9
0	1	1	0	10	1	0	0	1	10
0	0	0	0	None or FS	1	1	1	1	None or FS
Open	Open	Open	Open	None or FS	Open	Open	Open	Open	None or FS

Low Logic Driver Truth Table for 1P2T & Transfer Latching Switches			High Logic Driver Truth Table for 1P2T & Transfer Latching Switches		
Logic 2	Logic 1	Position Activated	Logic 2	Logic 1	Position Activated
1	0	1	0	1	1
0	1	2	1	0	2

Low Logic Driver Truth Table for 1P2T & Transfer Failsafe Switches		High Logic Driver Truth Table for 1P2T & Transfer Failsafe Switches	
Logic	Position Activated	Logic	Position Activated
0	Normally Open	1	Normally Open
1	Normally Closed	0	Normally Closed

Low Logic Driver Truth Table for 1P3T to 1P10T Switches										
Logic										Position Activated
10	9	8	7	6	5	4	3	2	1	
1	1	1	1	1	1	1	1	1	0	1
1	1	1	1	1	1	1	1	0	1	2
1	1	1	1	1	1	1	0	1	1	3
1	1	1	1	1	1	0	1	1	1	4
1	1	1	1	1	0	1	1	1	1	5
1	1	1	1	0	1	1	1	1	1	6
1	1	1	0	1	1	1	1	1	1	7
1	1	0	1	1	1	1	1	1	1	8
1	0	1	1	1	1	1	1	1	1	9
0	1	1	1	1	1	1	1	1	1	10
1	1	1	1	1	1	1	1	1	1	None or Failsafe
Open	Open	Open	Open	Open	Open	Open	Open	Open	Open	None or Failsafe

High Logic Driver Truth Table for 1P3T to 1P10T Switches										
Logic										Position Activated
10	9	8	7	6	5	4	3	2	1	
0	0	0	0	0	0	0	0	0	1	1
0	0	0	0	0	0	0	0	1	0	2
0	0	0	0	0	0	0	1	0	0	3
0	0	0	0	0	0	1	0	0	0	4
0	0	0	0	0	1	0	0	0	0	5
0	0	0	0	1	0	0	0	0	0	6
0	0	0	1	0	0	0	0	0	0	7
0	0	1	0	0	0	0	0	0	0	8
0	1	0	0	0	0	0	0	0	0	9
1	0	0	0	0	0	0	0	0	0	10
0	0	0	0	0	0	0	0	0	0	None or Failsafe
Open	Open	Open	Open	Open	Open	Open	Open	Open	Open	None or Failsafe