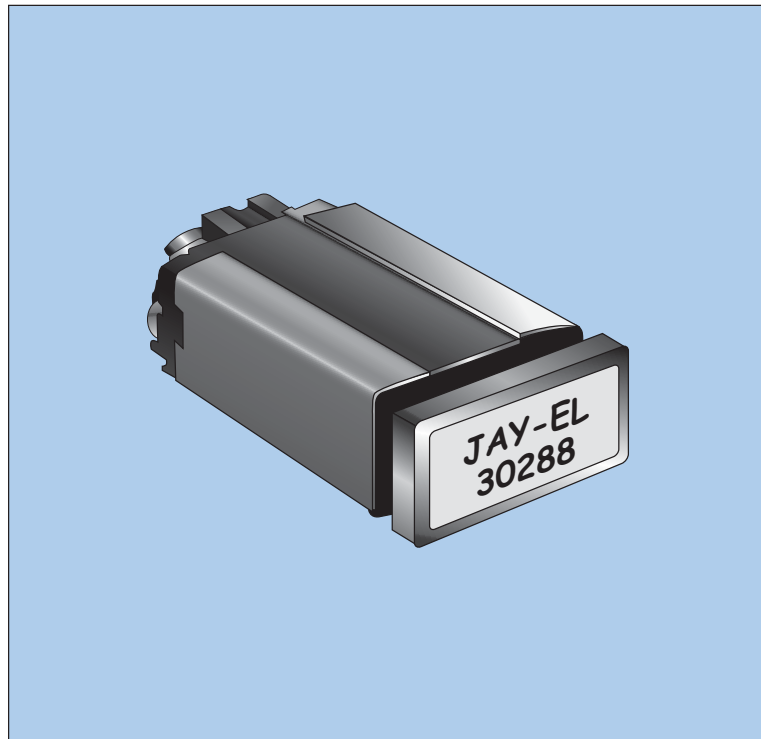
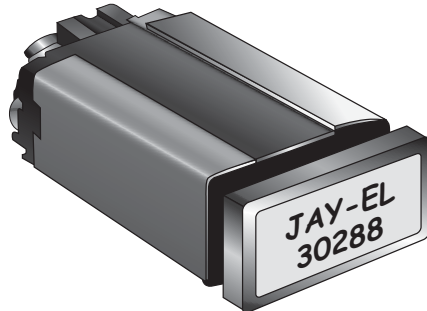


Jay-El Mark 12 P/N 30288



**JAY-EL MARK 12 P/N 30288
ILLUMINATED PUSHBUTTON SWITCH
MEETS REQUIREMENTS OF
MIL-S-22885**

COMPACT PRESS-TO-RELAMP INDICATOR

The Mark 12 may be mounted individually or matrix mounted for caution light panels.

When matrix mounted, individual units may be replaced without interfering with adjacent units. This indicator is light weight front relampable, features screw terminals, and is available with T-1 or T-1³/₄ lamps

**MOUNTING**

Mounting is easily achieved by use of sleeve which securely clamps the flanged-front housing to the mounting panel with two #2 stainless steel screws and lockwashers. Mounting torque is 1 inch pounds \pm .5.

The Mark 12 is designed so the front surface of the lamp capsule in the installed condition is approximately flush with a Mil-P-7788 panel. The unit will mount in panels .055 to .190 thick.

SCREW TERMINAL CONNECTION

No soldering required. The rear terminal block incorporates two terminal lugs.

The screw terminals are molded into place and will accept a terminal of .25 diameter relative to the #4 screw specified.

SPECIAL OPTIONS

1. Three terminal for individual lamp input and ground.
2. Pull to re-lamp rather than standard press-to-re-lamp.

Contact Jay-El for ordering information.

PRESS TO RELAMP FEATURE

Pressing face of legend plate, releases lamp capsule for relamping. Capsule remains captive to housing during relamping, or it may be removed entirely from housing for complete replacement. Unit accepts two lamps.

WEIGHT

Weight is 0.9 ounce maximum (unsealed).

ENVIRONMENTAL SEALING - MIL-STD-108

The Mark 12 can be supplied with an integral seal which has passed Splash Proof requirements to Mil-Std-108, High Shock to Mil-S-901C and Mil-S-22885.

LEGEND REQUIREMENTS

Jay-El can provide P/N 30288 indicators with NVIS compatible lighting.

Many combinations of character or background illumination may be accomplished, including sunlight readable Display Type 8.

Display Type 8 Pushbuttons are available with T-1 or T-1³/₄ based lamps. T-1 lamps are recommended.

ORDERING PROCEDURE - Fill out Preliminary Product Specification using Tables below and submit to Jay-El for Customer Code assignment.

TABLE 1 BASIC P/N	TABLE 2 MOUNTING TYPE	TABLE 3 BEZEL COLOR	TABLE 4 SPLIT GROUND	TABLE 5 EMI	TABLE 6 INTEGRAL SEAL	TABLE 7 RETAINED PUSHBUTTON	TABLE 8 PUSHBUTTON STYLE	TABLE 9 SWITCH POLES	TABLE 10 CONTACTS	TABLE 11 SWITCH ACTION
30288	NOT APPLICABLE	NOT APPLICABLE	NOT APPLICABLE	YES NO	YES NO	NOT APPLICABLE	NOT APPLICABLE	NOT APPLICABLE	NOT APPLICABLE	NOT APPLICABLE

TABLE 12 UNLIGHTED BACKGROUND COLOR	TABLE 13 DISPLAY DATA	TABLE 14 * LIGHTED COLOR	TABLE 15 ** DISPLAY TYPE	TABLE 16 CHARACTER SIZE AND PLACEMENT	
BLK BLACK DW DIFFUSED NG WHITE NUETRAL GRAY R RED A AMBER Y YELLOW G GREEN B BLUE	TO BE SPECIFIED ON PRELIMINARY FORM	C CLEAR R RED A AMBER Y YELLOW G GREEN B BLUE DW DIFFUSED WHITE WL WHITE LIGHT	NG NUETRAL GRAY AG AVIATION GREEN AY AVIATION YELLOW AG1 AVIATION GREEN 1 B1 BLUE 1	1. BLACK CHARATERS ON DIFFUSED WHITE BACKGROUND. BACKGROUND ILLUMINATES IN COLOR. 2. REPLACED BY DISPLAY TYPE 7. 3. NOT READILY DISCERNIBLE . OPAQUE CHARACTERS ON NEUTRAL GRAY ILLUMINATING BACKGROUND. 4. ILLUMINATING CHARACTERS ON BLACK BACKGROUND. CHARACTERS SHALL NOT APPEAR ILLUMINATED IN UNLIT CONDITION. 5. CONTRASTING OPAQUE CHARACTERS ON ILLUMINATING COLORED BACKGROUND. BLACK CHARACTERS ON YELLOW OR AMBER BACKGROUND. WHITE CHARACTERS ON ALL OTHER COLORS. 6. DISPLAY TYPES NOT COVERED BY THIS TABLE SHOULD BE SPECIFIED BY A NOTE ON PURCHASE ORDER OR MAY BE SPECIFIED ON JAY-EL CUSTOMER SPECIFICATION. 7. WHITE CHARACTERS ILLUMINATE IN COLOR ON BLACK BACKGROUND. 8. SUNLIGHT READABLE ILLUMINATING CHARACTERS ARE HIDDEN BEFORE LIGHTED. BLACK BACKGROUND. CHARACTERS ARE VISIBLE IN DIRECT SUNLIGHT. (10,000FC) WHEN LIGHTED.	SEE CHARACTER INFORMATION CHART TABLE 17 LAMPS T1 NUMBER 328 5V 330 12V 387 28V T1 NO VOLTS 718 5V 6839 28V OR EQUIVALENT

NOTES

- * AG OR AY SHOULD BE SPECIFIED WHEN GREEN OR YELLOW IS TO MEET MIL - C - 25050 AY APPEARS AMBER WHEN ILLUMINATED.
- * B1 AND AG1 SPECIAL HIGH BRIGHT BLUE & GREEN RECOMMENDED FOR DISPLAY TYPE 8.
- ** DISPLAY TYPE 8 IS AVAILABLE IN .012 STROKE WIDTH ONLY.

CHARACTER INFORMATION
(HORIZONTAL DIRECTION ONLY)

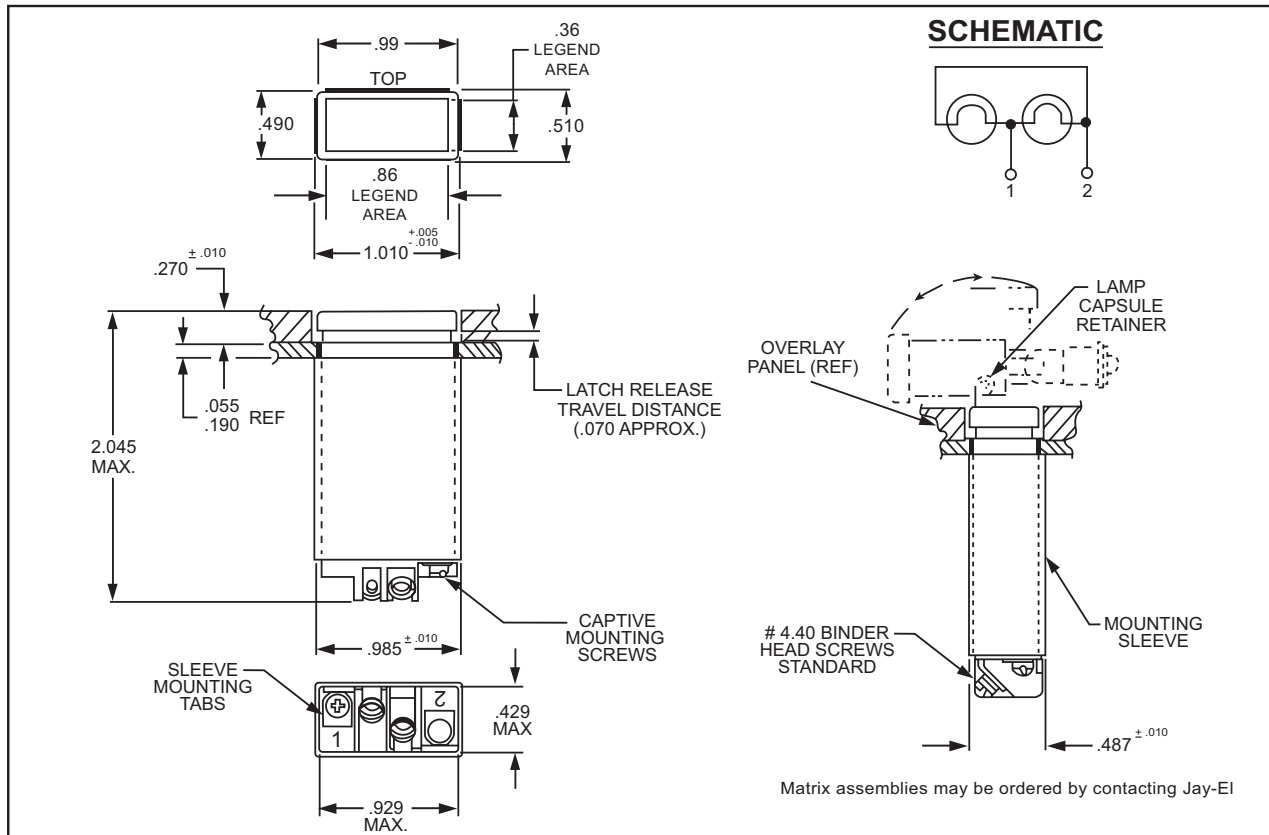
To obtain more characters per line other type fonts are available. Contact Jay-El for further information.

CONDENSED BLOCK	SIZE	STROKE	HEIGHT	CHARACTERS PER LINE	LINES OF CHARACTERS
JAY-EL PRODUCTS INC.	-1	.010	.072	14	3
JAY-EL PRODUCTS INC.	-2	.012	.087	12	3
JAY-EL PRODUCTS INC.	-3	.015	.109	9	2
JAY-EL PRODUCTS	-4	.018	.125	8	2
JAY-EL PRODUCTS	-5	.020	.145	7	1
JAY-EL PRODU	-6	.025	.175	5	1
JAY-EL PRO	-7	.035	.222	4	1

DISPLAY TYPE 8 ONLY illuminating Area .700 x .280

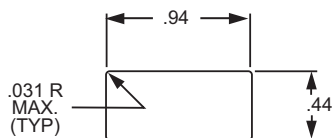
FUTURA MEDIUM CONDENSED	SIZE	STROKE	HEIGHT	CHARACTERS PER LINE	LINES OF CHARACTERS
JAY-EL PRODUCTS INC.	-1	.012	.072	14	2
JAY-EL PRODUCTS INC.	-2	.012	.087	12	2
JAY-EL PRODUCTS INC.	-3	.012	.109	9	2
JAY-EL PRODUCTS	-4	.012	.125	8	1
JAY-EL PRODUCTS	-5	.012	.145	7	1
JAY-EL PRODU	-6	.012	.175	5	1
JAY-EL PRO	-7	.012	.222	4	1

MAJOR OUTLINE DIMENSIONS

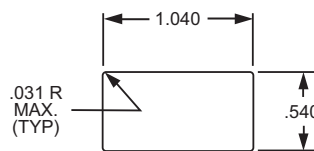


MOUNTING PANEL CUTOUTS

Unsealed Units



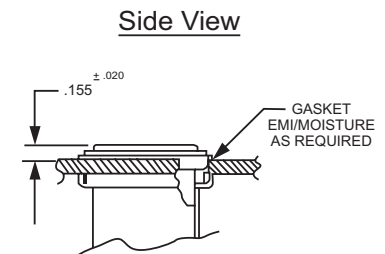
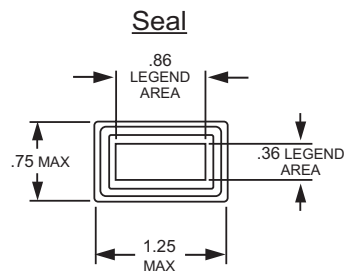
METAL PANEL
(.055 TO .190 THICK)



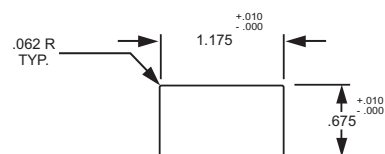
PLASTIC OVERLAY PANEL
(.220 TO .240 THICK)

INTEGRAL SEALED UNITS

Splashproof per Mil-Std-108



Panel Cutout



Tolerances: Unless otherwise specified - Fraction $\pm 1/32"$, $.XX \pm .01$, $XXX \pm .005$

ALL INFORMATION PUBLISHED IN THIS CATALOG IS EFFECTIVE AT TIME OF PUBLICATION AND IS SUBJECT TO CHANGE WITHOUT NOTICE.